

Stantec in the UK & Ireland

Design with community in mind



CONTENTS



With your reading experience in mind, we have built in easy ways for you to navigate this document.

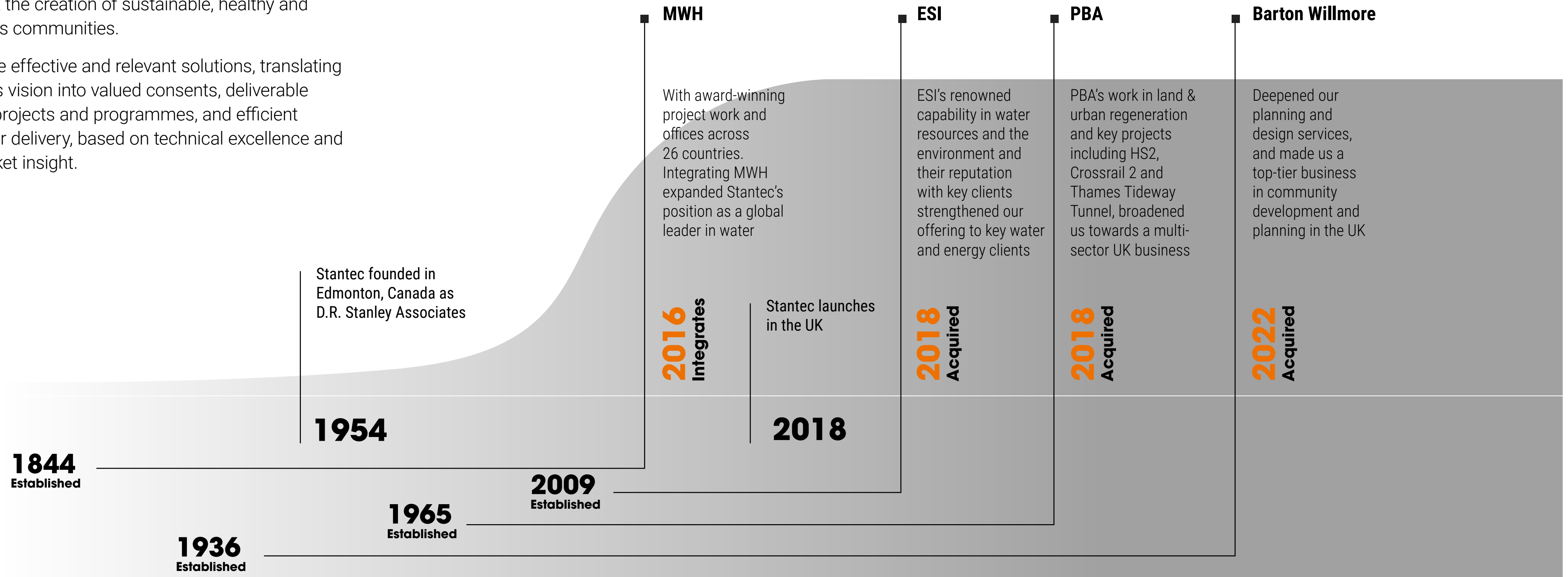
Use the bottom menu and the table of contents to flip to different sections. Watch for arrows, buttons, and hyperlinks throughout the document, they will lead you to more information.

We Design With Community In Mind

We have been working with our clients and communities in the UK for over 150 years. With over 2,100 people working in integrated regional teams across the UK & Ireland. We plan, design, deliver and manage the development and infrastructure needed to support the creation of sustainable, healthy and prosperous communities.

We provide effective and relevant solutions, translating our client's vision into valued consents, deliverable plans for projects and programmes, and efficient designs for delivery, based on technical excellence and deep market insight.

£3.57
Billion
Market cap



Our purpose

Changing technologies, societal shift and climate disturbance mean that to thrive, or even survive, organisations must constantly adapt.

Stantec is a global professional services company of designers, architects, engineers, scientists, planners and project managers, innovating together to support our clients navigate these challenges and create a more sustainable world.

Our Values

- We put people first
- We are better together
- We do what is right
- We are driven to achieve



**Top
Global
Design
Firms**

ENR

**Climate
Leader**

CDP

**Gender
Equality
Leader**

Bloomberg

**World's
Best
Employers**

Forbes

#1
**Ranked the
most sustainable
engineering firm
in the world**

Corporate Knights

#17
**Ranked 17th
most sustainable
corporation
in the world**

Corporate Knights

What we do

Delivering transformative major infrastructure projects

Major infrastructure programmes should deliver real social value and economic development outcomes to the communities they serve.

At Stantec, we are proud to have worked on some of the biggest and most transformative infrastructure projects across the globe that address climate change, economic development, social inequality, adaptability and resilience. Within the UK and Ireland this includes work on HS2, the London sewer network and the first smart water network in the UK, and for clients including National Highways and National Grid.

We deal with today's challenges, but also keep a fairer, better tomorrow in sight, looking at how we deliver clean growth, support radical changes in our economy and meet the needs of future communities.

We design with community in mind.

Local Delivery, Global Expertise

At Stantec, we strive to exceed your expectations by fully comprehending your needs, interpreting them in creative and cost-effective ways, and by providing superb service and responsive follow-up regardless of location. How do we achieve this?

We start by bringing in the right staff at the right locations. We seek maximum quality and efficiency, and more timely reporting to deliver best value services.

Our integrated team will provide the best of both worlds: global knowledge and understanding coupled with a local appreciation for your unique needs, resources, and constraints – informing the project's agenda from the start and delivering the advantage of local solutions.



Protecting and enhancing the environment

We envision a world where infrastructure gives back, water is protected, natural systems are valued, biodiversity is prioritised, nothing gets wasted, development is responsible, everyone can access renewable energy, and society is just.

Although our efforts to provide a sustainable operation are significant, we recognise that our greatest influence comes from the services we provide to clients and communities. Stantec is embedding the principles of low carbon design throughout the project delivery processes, and following a carbon hierarchy approach to build less and build smarter, and is PAS2080 accredited.

By delivering societal and environmental benefits, our ambition is to shape places that are fit for the future.

Recent strategic investments

Sustainability-linked loan

First in the world to link our sustainability-linked loan to Bloomberg Gender Equality Index

53% SDG revenue

The UN Sustainable Development Goals serve as a model for what it means to truly design with community in mind. The percentage of our gross revenue that comes from the 7 SDGs we impact most is 53%

Carbon neutral

So far, achieved carbon neutrality for operations in the UK, New Zealand and European Union

1.5 °C Science-based target

Validated our SBT against a 1.5 °C trajectory, the most ambitious goal of the Paris Agreement



The 7 SDGs we impact most.

Places First

It is increasingly recognised that current planning processes deliver car dependent developments, lacking local facilities or support for active, healthy lifestyles. As our industry looks to accelerate delivery of housing and employment, Stantec is asking how we can deliver in a way that creates healthy, sociable, prosperous, sustainable communities. Places First is our vision and validate approach, repurposing the development planning process to deliver better communities.

[Learn More →](#)

Social value

Stantec works to enhance quality of life, resilience, liveability and safety. We are committed to delivering benefits to both our staff and society through programmes including learning and development, work experience and apprenticeships, equality, diversity & inclusion (ED&I), Stantec in the Community, school engagement and science, technology, engineering and maths (STEM) initiatives.

[Learn More →](#)

Our pledges

Pledge to Net Zero

ICE 13 Point Pledge

Carbon neutral by 2022

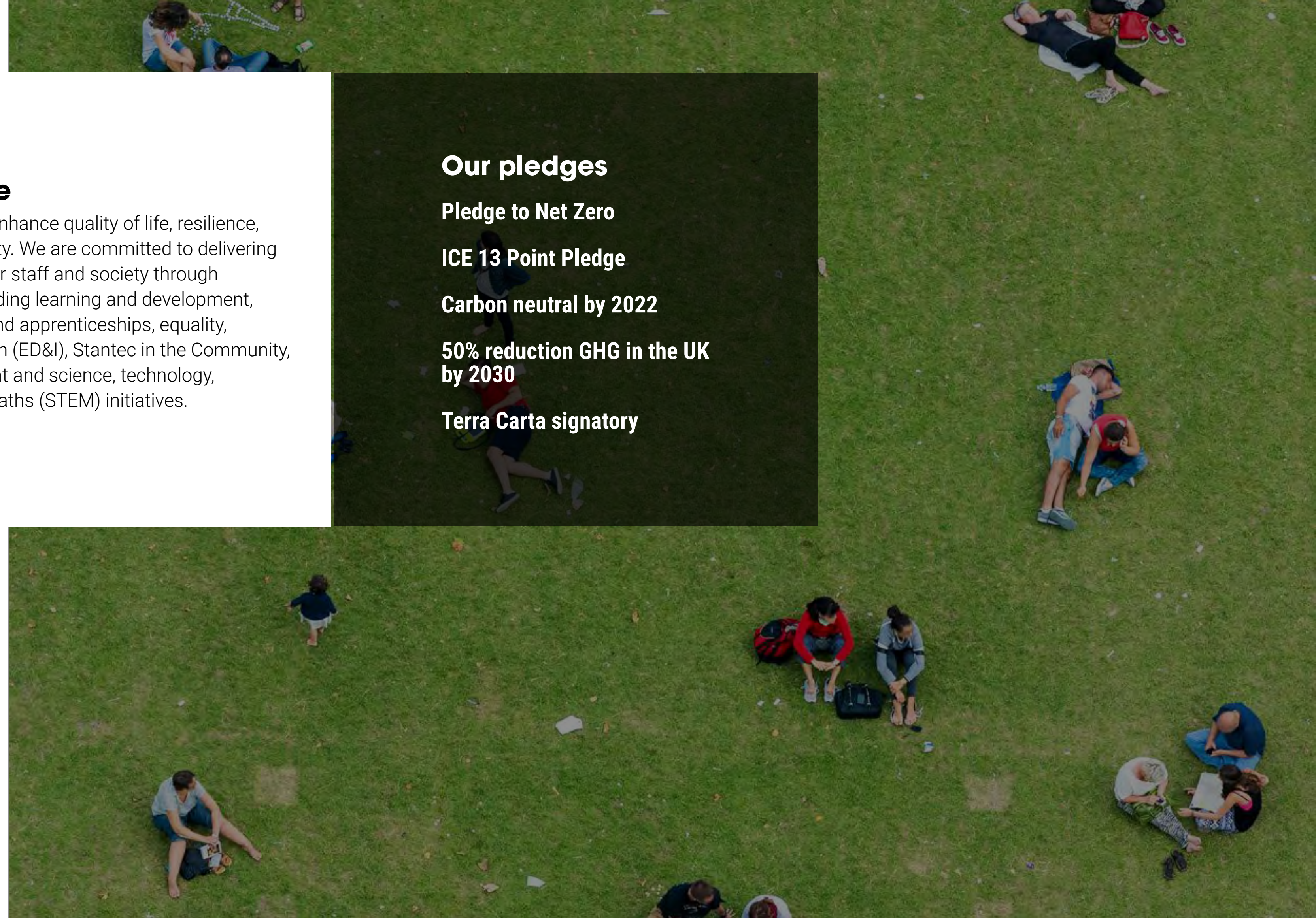
50% reduction GHG in the UK by 2030

Terra Carta signatory

Better Places research project

A continuation of the Places First work, the aim of our Better Places research project is to develop a tool that makes it feasible to incorporate social value into early decision making around the use of land. In particular, it will provide an enabling framework for the inclusion of social value assessments in the local development planning process and strategic design making.

[Learn More →](#)



UK SERVICES

A

Acoustics & Vibration

Alternative Project Delivery

Applications Engineering

Architecture

Assessments & Permitting

Asset Management

Asset Rehabilitation & Upgrades

AV Engineering

B

Bridge Inspections & Assessments

Bridge Maintenance

Buildings Engineering

C

Campus Planning & Delivery

Carbon Footprinting & Accounting

Carbon Management

Civil Engineering

Climate Advisory Services

Climate Change Risk Assessment

Coastal & Marine Ecosystems

Commercial & Cost Management

Commercial Order Management Systems

Commissioning & Validation

Community & Stakeholder Engagement

Community Development

Computing Platforms & Advanced Analytics

Construction Management & Inspection

Data Analytics & Visualisation

D

Detailed Engineering & Design

Due Diligence & Consulting

Ecosystem Restoration

E

EHS Compliance

Electrical Engineering

Energy Audits

Environmental Services

Environmental, Health & Safety Compliance

Feasibility Studies & Design

F

Flood Resilience

G

Geospatial

Geotechnical Engineering & Materials Testing

H

Hydrogen Mapping

Hydrology & Geochemistry

I

Industrial & Logistics Consultancy

Information Management Systems

Infrastructure Management & Pavement

Engineering

L

Intelligent Transportation Systems

Land Use Planning

Landscape Architecture

Licencing

Lighting Design

M

Management & Technology Consulting

Material Handling Systems

Mechanical Engineering

Microgrids & Grid Modernisation

Mine Water Treatment

Natural Capital & Natural Resource Economics

N

Nature Based Solutions

Neutrient Neutrality

Numerical Modelling Solutions

O

Operational Readiness

P

Planning, Consenting & Approvals

Process Engineering

Project & Programme Management

Project Planning, Design & Delivery

R

Research & Benchmarking

Resilient Adaptation & Mitigation

Risk Assessments

Road User Charging

S

Smart Cities

Smart Mobility

Strategic Water Resources

Strategy & Planning

Structural Engineering

Surveying & Mapping

Sustainability

Systems Engineering & Integration

T

Technical Writing & Editing

Traffic Engineering

Transmission & Distribution

Transport Modelling & Assessment

Transport Planning

Tunnelling

U

Urban Planning & Design

V

Venue Logistics Planning

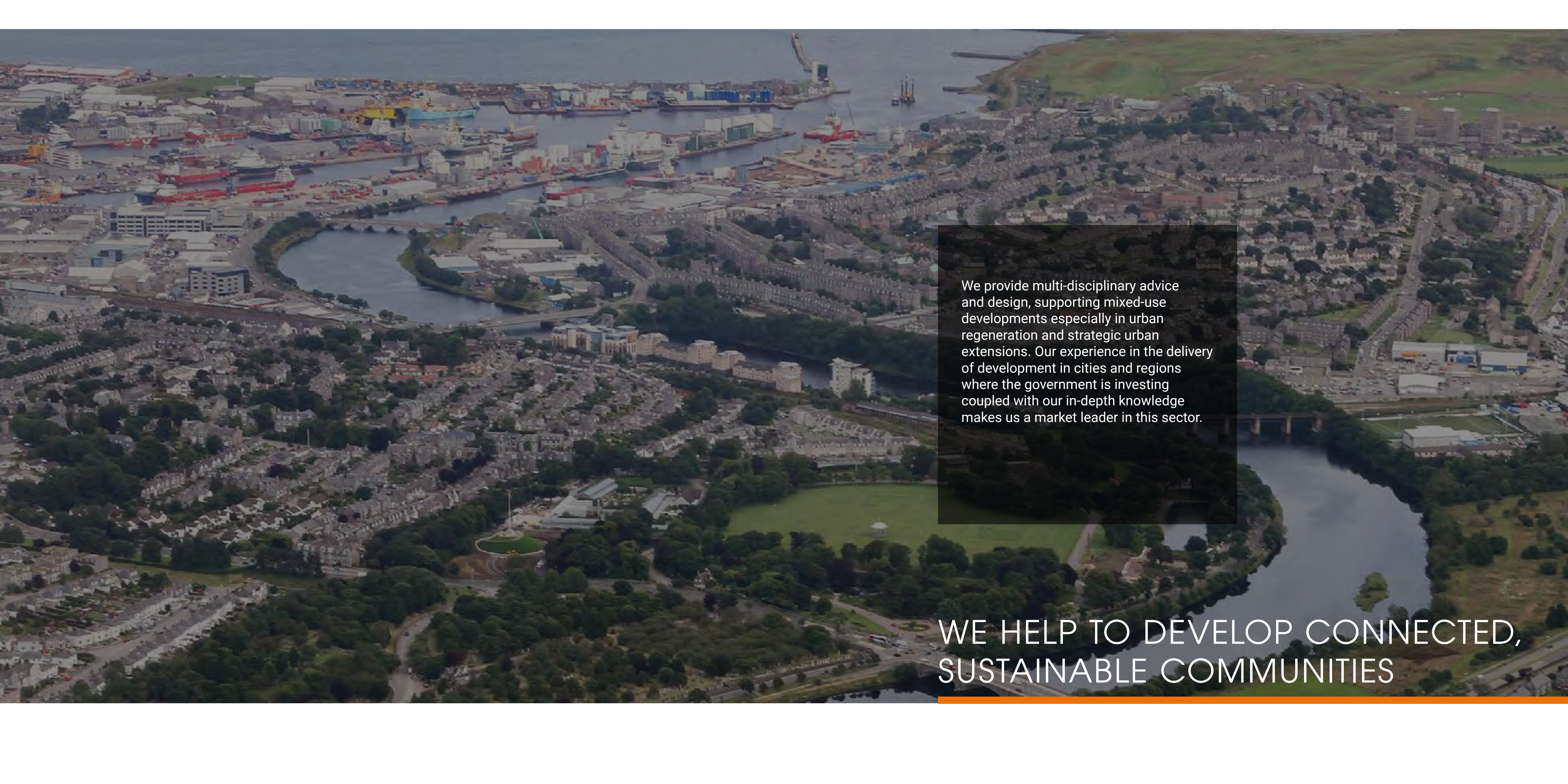
W

Waste Logistics & Collection

Water networks and treatment

Water resources and networks

Water treatment



We provide multi-disciplinary advice and design, supporting mixed-use developments especially in urban regeneration and strategic urban extensions. Our experience in the delivery of development in cities and regions where the government is investing coupled with our in-depth knowledge makes us a market leader in this sector.

WE HELP TO DEVELOP CONNECTED,
SUSTAINABLE COMMUNITIES



ENABLING DEVELOPMENT

Cambridgeshire

Urban&Civic engaged Stantec to help create a sustainable urban extension with a clear focus on placemaking and quality. A lack of local road capacity meant it was necessary to define a transport assessment and mitigation strategy to allow the development to proceed.

A focus on sustainable movement and an incremental approach to development and highway mitigation, resulted in a flexible strategy that reviews development at key stages. Taking account of future market conditions, travel demand, modal

shift, behavioural change, traffic growth, and infrastructure delivery allows the development to proceed in a sustainable way, building in resilience and flexibility.

Highways England called the 'monitor and manage' process followed by Urban & Civic and Stantec an exemplar of how the determination process should be followed.

[Learn More →](#)



GRAVITY IS THE FUTURE, NATURALLY

Somerset

Planning consent achieved in late 2017 paved the way for Salamanca Group to deliver a state-of-the-art campus and 7,500 jobs across creative digital, logistics, and distribution sectors.

But the rural site, adjacent to existing villages lacked infrastructure to support construction or operation. In response, Stantec designed a link road and green bridge to connect the site, and improve local accessibility and highway safety.

Working with Salamanca Group, Sedgemoor District Council, and the highway authorities,

the solution unlocks the site. Additionally, we made a successful case to secure funding from the Heart of the South West local enterprise partnership, which will support scheme delivery.

[Learn More →](#)



CREATING BETTER PLACES

Cambridge

As part of the Waterbeach Barracks design team, Stantec's focus was to provide residents with opportunities to live healthier, active and more sustainable lifestyles. Realising this ambition meant fundamentally changing the emphasis on how people move around the site and to other existing communities.

Waterbeach Barracks will be the first development of its size to incorporate Copenhagen style continuous footway crossings at the entrance to all housing

parcels; providing a strong visual and physical indication that a transition is being made from a vehicle dominated space to a pedestrian and cycle dominated one.

Encouraging a modal shift of travel behaviour allows investment to be focused on creating a great place, enhancing wellbeing and delivering social value, whilst creating a safer, more environmentally friendly community.

[Learn More →](#)



REGENERATING AREAS

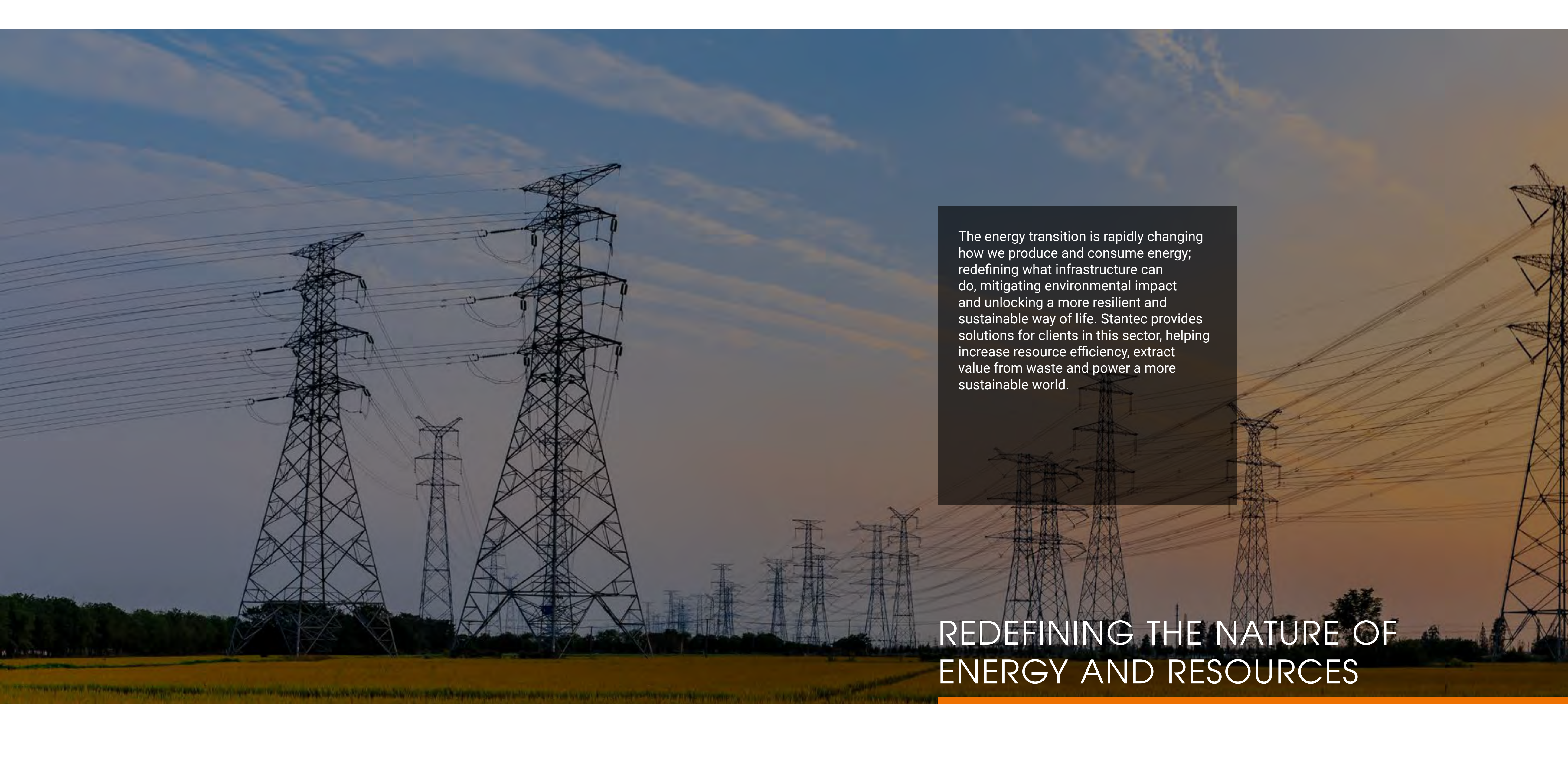
London

To date, Agar Grove is the largest council community investment programme (CIP) scheme and the largest Passivhaus scheme in the United Kingdom.

Stantec supported the architect on engineering constraints, carrying out forensic engineering studies on a retained tower block and providing multi-disciplinary technical support for the overall master plan to create more livable spaces between buildings.

To address fuel poverty issues in the borough, the bright new homes will be built to deliver low heating bills and comfortable living. We provided structural, civil, transport, geotechnical, noise, air quality and flood risk services.

[Learn More →](#)



The energy transition is rapidly changing how we produce and consume energy; redefining what infrastructure can do, mitigating environmental impact and unlocking a more resilient and sustainable way of life. Stantec provides solutions for clients in this sector, helping increase resource efficiency, extract value from waste and power a more sustainable world.

REDEFINING THE NATURE OF ENERGY AND RESOURCES



GRID SCALE, CLEAN ENERGY STORAGE AND GENERATION

Great Glen

SSE Renewable's Coire Glas project will provide 1,296 MW of carbon free, clean energy. The first major pumped storage scheme to be built in the UK in over forty years, it will offer large capacity on demand.

Stantec completed reference designs for engineering, supported procurement of the construction contractor (including the dam, tunnels, underground powerhouse cavern, access roads, and associated infrastructure), and completed all environmental permitting to enable construction in an environmentally sensitive

location.

A large focus of our work was supporting the business case with socio-economic information, including 3D landscape and visual impact assessments for stakeholder meetings.

Enabling construction will more than double the UK's pumped hydro storage capability, helping the UK Government enact its carbon reduction plan.

[Learn More →](#)



REDUCE, REUSE, RECYCLE, RECOVER

Dunbar

Viridor wanted to develop an energy-from-waste plant at its existing operation in Dunbar, Scotland as part of its £357 million investment in Scottish waste infrastructure, in-line with Scotland's ambitions to deliver a zero-waste circular economy.

Planning permission for their two stream plant - processing up to 300,000 tonnes of waste per year, with the capacity to generate up to 30 megawatts - and made provision for an additional heat export facility of 10 megawatts. Stantec served as owner's engineer for the £177 million

scheme, providing project management and engineering technical services.

Built by a B&W Vølund and Interserve Joint Venture through an engineering, procure and construct contract, the heat export facility became fully operational in 2019, and supports 55 full-time jobs, boosting the East Lothian economy by £10 million.

[Learn More →](#)



ADVISING ON VITAL WASTE AND ENERGY INFRASTRUCTURE

London

Stantec acted as lead planning and environmental advisor to Cory Riverside Energy, supporting its application for a development consent order (DCO) for Riverside Energy Park.

Comprised of an energy from waste facility, anaerobic digestion facility, battery storage, and solar photovoltaics. The park will divert up to 805,000 tonnes of non-recyclable waste from landfill, producing up to 96MW of low carbon renewable electricity.

We supported pre-application and examination (including expert witness support), advised on waste and DCO planning policy, lead development of the

consultation strategy, and supported stakeholder and public consultation events.

Our technical environmental assessments and advice covered air quality, noise, ecology, hydrology and flood risk, landscape, ground conditions, transport, socioeconomics and health impact assessment and achieving biodiversity net gain.

The DCO was granted in 2020 and the plant is expected to be operational by 2025.

[Learn More →](#)



FUELLING THE CIRCULAR ECONOMY

Avonmouth

To help meet rising demand for recycled polymers, Viridor implemented the 80,000 tonnes-throughput per-year Polymers 2 Project on their Avonmouth reprocessing centre, supplying it with heat and power from their existing energy from waste facility. Appointed as EPCm Integration Consultant, Stantec undertook Principal Designer duties, led overall integration of processing systems, developed and maintained the project program using 4D BIM, and worked as part of the integrated team to install, commission and optimise the plant.

The project benefited from our understanding of the technologies and processes used in the scheme, ensuring a seamless interface between the technology provider, existing site operations and stakeholders.

[Learn More →](#)



Stantec is at the forefront of the water industry; supporting our clients in managing and meeting increasingly stringent water and wastewater quality and regulatory requirements, whilst facilitating innovative, cost effective solutions. We provide services related to water resources, reservoirs and dams, water supply, wastewater networks and treatment, flood mitigation and river basin management.

PROVIDING SUSTAINABLE WATER
SOLUTIONS FOR COMMUNITIES



THE UK'S FIRST SMART WATER NETWORK

Sheffield

Yorkshire Water, working in collaboration with Stantec and other stakeholders, has created the UK's first smart water network.

Incorporating a real-time, informed hydraulic digital twin and using state-of-the-art digital water meters, sensors, advanced analytics and telecommunications channels, the pilot will revolutionise the way Yorkshire Water manages leaks and interruptions to supply in the future.

We provided engineering and technical services on the successful project, which has already reduced leakage by 32% in district metered areas with high intensity sensors and smart meters. These efficiencies reduced CO2 emissions by 42%, delivering major environmental and social benefits for the community.

[Learn More →](#)



A COMBINED SEWER SOLUTION THAT LOWERS CARBON AND COSTS

Yorkshire Water

When space constraints and ancient woodland meant traditional solutions couldn't work for spill from the Roundhay Park combined sewer overflow (CSO), Stantec was appointed to find an innovative alternative.

Our team used hydraulic modelling to demonstrate how underused network capacity, a weir and bypass system and Sustainable Drainage System (SuDS) could solve the problem.

This combination of solutions avoided significant carbon associated with large scale 'grey infrastructure'. It will continue to reduce carbon by reducing flow at the downstream treatment works, offering financial benefits that will continue throughout the life cycle.

Plants used within the SuDS will enhance the appearance of the local area, remove harmful pollutants, improving biodiversity and delivering a social boost.



INFRASTRUCTURE RESILIENCE TO ADDRESS FUTURE CLIMATE RISKS

London

London's sewer network remains largely unchanged since being built in Victorian times, with sewage often overflowing into the Thames. The new 25-kilometre super sewer will significantly reduce pollution by intercepting untreated raw sewage.

Stantec supported the environmental impact assessment, transport assessment, construction logistics strategy and was key in developing a plan to move over 50% of construction and excavated materials using

the river, saving over 500,000 heavy goods vehicle trips through central London.

[Learn More →](#)



A NATURAL CAPITAL ASSESSMENT OF GROUNDWATER

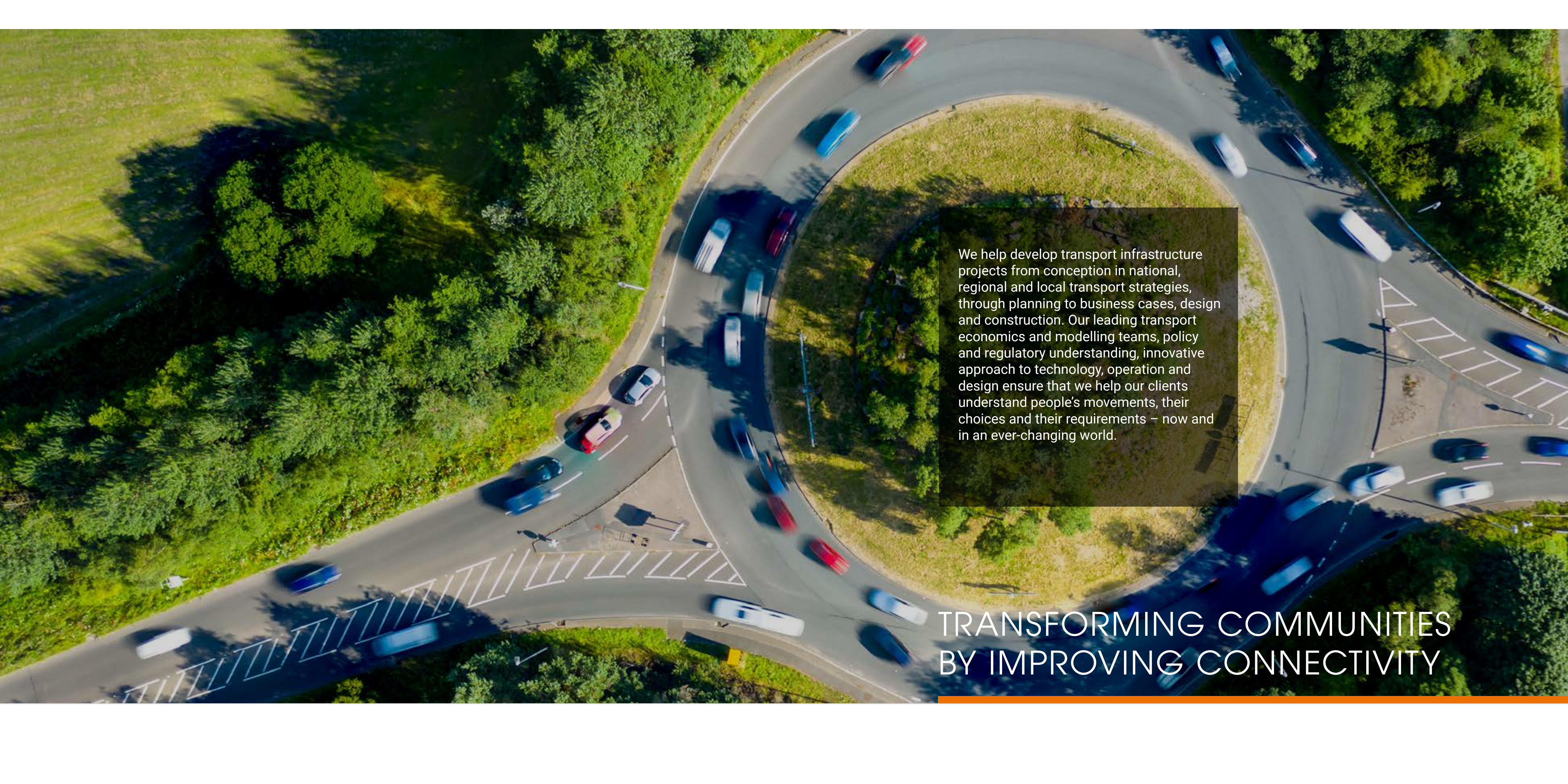
England

When the Environment Agency (EA) wanted to better understand and demonstrate the range and scale of environmental, social, and economic benefits groundwater provides at national and catchment level, they asked us to create a methodology and apply it to three pilot catchments studies—and England as a whole.

Working with Environmental Policy Consulting Ltd. as part of a multidisciplinary team, our analysis considered groundwater

quality and quantity and how issues combine. The EA can now track changes in natural capital and analyse the impact of pressures on groundwater, with a methodology that supports strategic decisions, estimating costs of reductions, or losses of natural capital from over-abstraction.

[Learn More →](#)



We help develop transport infrastructure projects from conception in national, regional and local transport strategies, through planning to business cases, design and construction. Our leading transport economics and modelling teams, policy and regulatory understanding, innovative approach to technology, operation and design ensure that we help our clients understand people's movements, their choices and their requirements – now and in an ever-changing world.

TRANSFORMING COMMUNITIES BY IMPROVING CONNECTIVITY



IMPROVING ROADS WITH NATIONAL HIGHWAYS

National

Working with VolkerFitzpatrick as part of the National Highways' Routes to Market Regional Delivery Partnership, Stantec has completed detailed design and construction support for a range of key projects.

The Regional Delivery Partnership incentivises contractors to improve safety and journeys on roads, rewarding companies who more accurately manage roadworks, buy more efficiently, reduce

road noise, encourage innovation and increase environmental benefits.

Through the partnership, our work includes the £200m M3 J9 scheme that will provide new free-flow grade-separated links between the M3 and A34, rebuilding the junction to reduce congestion, reduce accidents and provide better facilities for pedestrians and cyclists.



NATIONAL TRANSPORT STRATEGIES

Scotland & others

We worked with Transport Scotland to develop its new National Transport Strategy, gathering evidence and undertaking analysis to understand the key challenges facing transport in Scotland now and over the next 20 years.

The Strategy was published for national consultation, responses were analysed and we amended the Strategy to reflect suggestions from the public and a wide range of public, private, and third-sector

organisations.

The strategy will help create a more inclusive society which provides opportunities for all – while also responding to the Scottish Government's declared climate emergency and helping to achieve the statutory target of net zero emissions by 2045.

[Learn More →](#)



CREATING PEOPLE-FIRST INFRASTRUCTURE

Glasgow

To create an innovative urban realm, the Sustrans Creating People-First Infrastructure in a City Centre Campus project aims to rebalance streets in favour of walking and cycling.

Stantec provided infrastructure planning, transport planning, strategy and research to the project, which can act as an exemplar model of how to change city centre space to reflect the needs of active travel as preferred, sustainable modes.

The campus will improve the physical environment, creating an attractive, accessible, safe and walkable learning quarter in the north-east of the city centre.

[Learn More →](#)



CONNECTING BRITAIN

National

The £56 billion Highspeed Rail 2 (HS2) project aims to connect around 30 million people, providing new local train services to passengers and freight, and easing congestion and over-crowding.

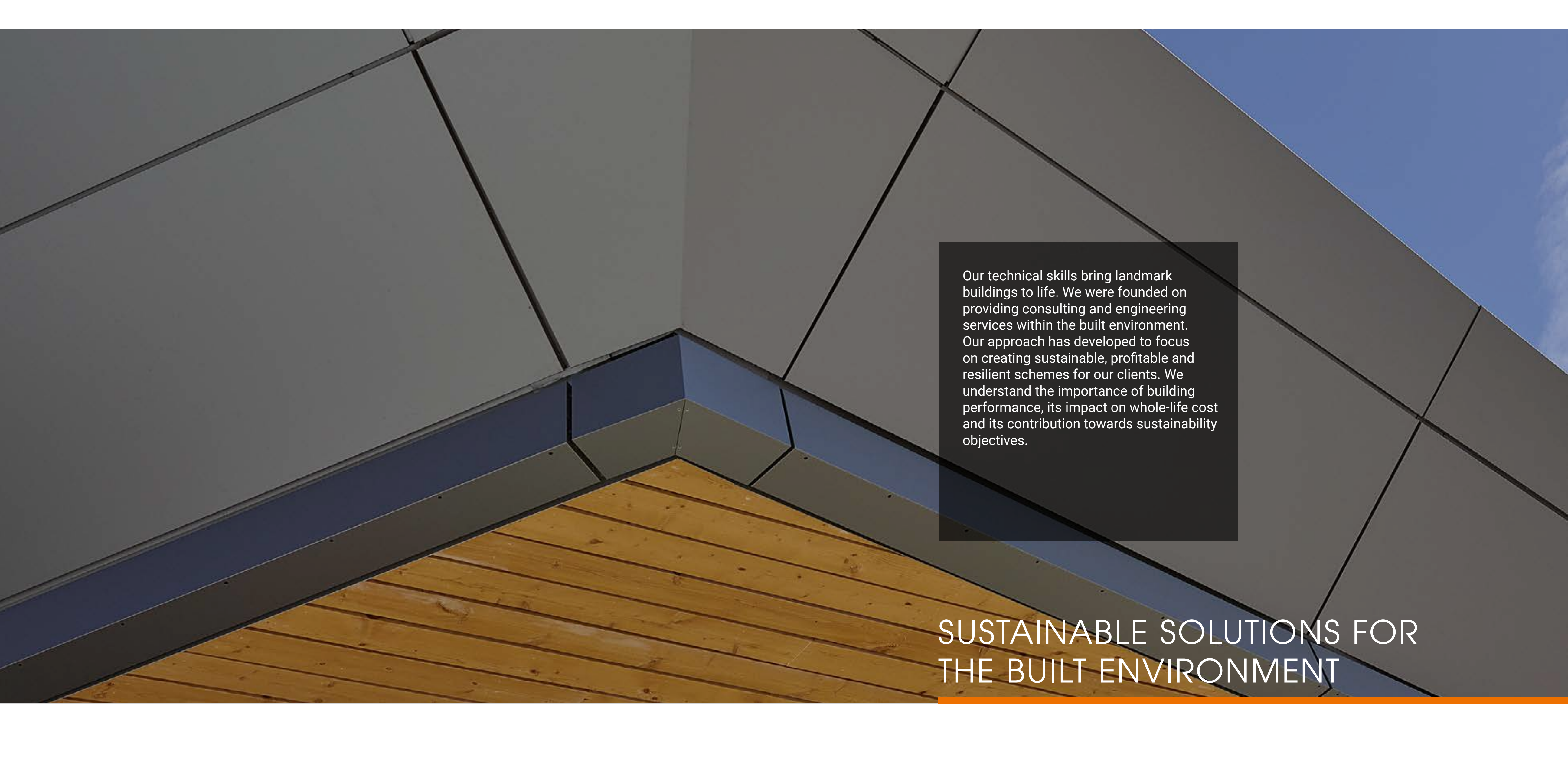
Our team is partnering with Bechtel in their role as delivery partner for the HS2 Phase 2B Hybrid Bill, under an 8-year contract. Stantec is supporting the management of a large team of design consultants working in a collaborative Hub, providing technical

assurance, programme management, and delivery of Hybrid Bill outputs for Phase 2B.

Our senior managers are also providing transport planning, environmental, utilities, property, and stakeholder engagement services.

Once completed, the 330 mile HS2 route will connect eight of Britain's ten largest cities.

[Learn More →](#)



Our technical skills bring landmark buildings to life. We were founded on providing consulting and engineering services within the built environment. Our approach has developed to focus on creating sustainable, profitable and resilient schemes for our clients. We understand the importance of building performance, its impact on whole-life cost and its contribution towards sustainability objectives.

SUSTAINABLE SOLUTIONS FOR
THE BUILT ENVIRONMENT



ENABLING REDEVELOPMENT

Reading

Appointed by Landid to enable redevelopment of Thames Tower, of an empty building located beside the refurbished Reading Railway Station, Stantec provided multi-disciplinary structural engineering services.

The existing 11-storey building, circa 1974, was stripped back to frame. Floor plates were extended and an additional four floors were added, creating over 18,000 square metres of space, including a new roof terrace.

Previous designs requiring demolition or foundation works had been financially unviable. Our design used a carefully considered programme of investigations, lateral thinking and targeted strengthening works to overcome the challenges and deliver an exceptional working environment in the heart of Reading.

[Learn More →](#)



A STEADY HAND FOR EXPERIMENTAL PHYSICISTS

Oxford

When designing the basement labs for the new Beecroft Building in the Science Area of Oxford, we included a very high degree of vibration isolation.

Isolation pads between columns and foundations, floating floors to labs, keel slabs, and air tables all helped create research labs with the right conditions for experimental physics.

We even modified an adjoining building, injecting grout and stabilising soil after

construction sequence modelling identified its foundation movements would be excessive.

With five above ground storeys providing office, teaching, and collaboration space, Beecroft joins the Lindemann and Townsend buildings to help the University of Oxford's physics students and faculty collaborate and experiment.

[Learn More →](#)



REDUCING EMBODIED CARBON

London

Occupying a prominent site opposite Farringdon Station, Layden House was an ageing office owned by the Local Government Association, who were keen to update and extend it.

To increase the floor area by 20%, the refurbishment included redesigning all mechanical and electrical services, total replacement of the façade and internal fit out. Balancing passive systems and energy efficient mechanical, electrical, and plumbing systems, combined with retention

of the existing structure delivered a high-quality office at a low carbon cost.

The result was a modern, flexible workspace that Stantec has since made its own base of operations in London.

[Learn More →](#)



CARBON NET ZERO BUILDING

London

One of London's most remarkable buildings and the world's first facility to study how we interact with our environment, UCL PEARL offers full-size simulations - facilitating research on access and mobility.

Our team modelled the mechanical and engineering systems necessary to create the immersive laboratory, as well as the building performance to test and predict future energy use.

The Person Environment Activity Research

Laboratory (PEARL) was designed to meet the low energy and carbon emissions targets set by University College London (UCL).

The performance modelling, combined with efficient building fabric and services, made PEARL UCL's first carbon net zero building.

[Learn More →](#)



Bridging the gap between digital transformation and the built environment

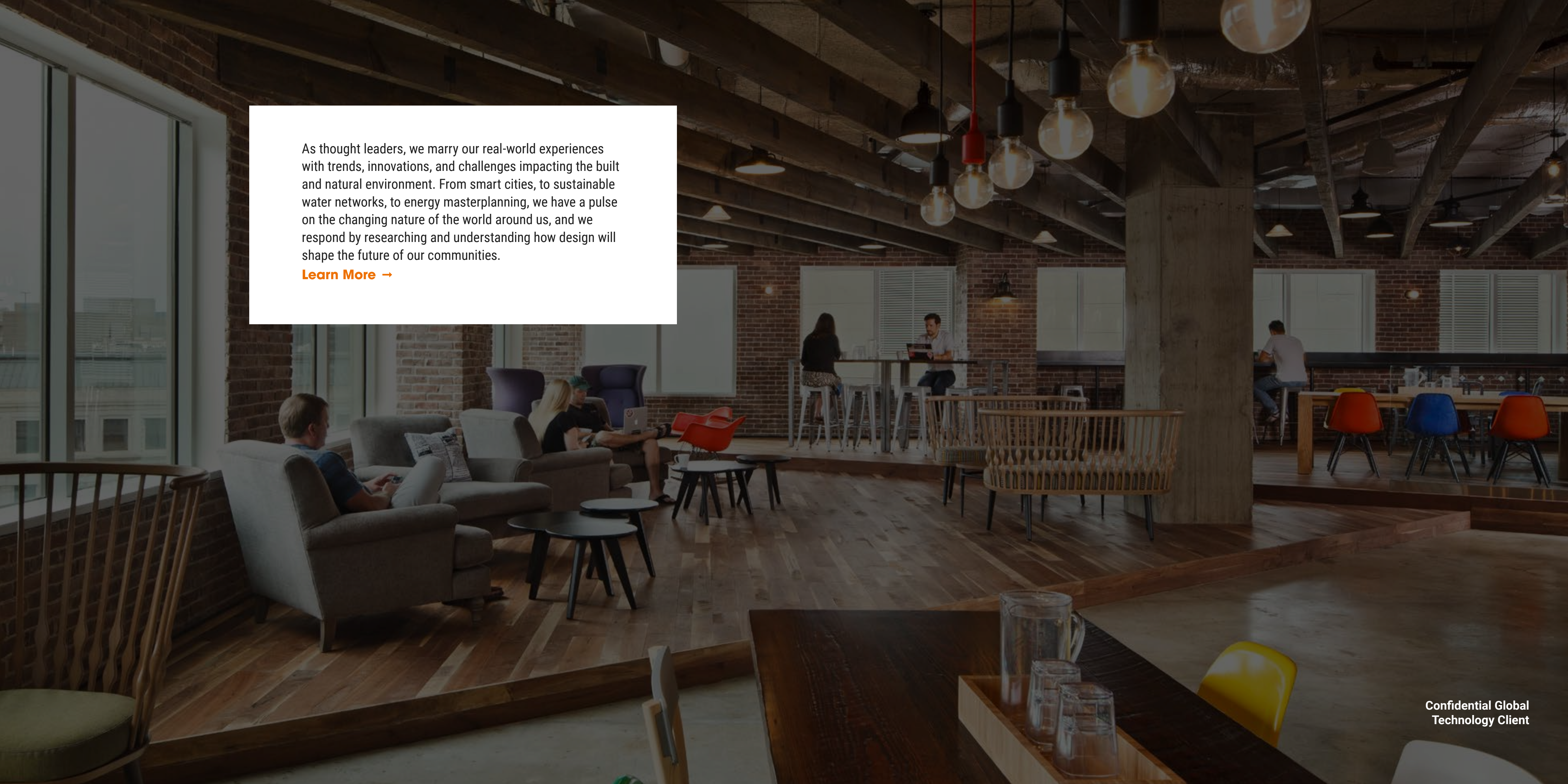
Advancements in digital technologies are transforming our industry and the way we help our clients to create equitable, sustainable communities, maximise performance of assets and enhance and protect the environment around us.

Through our suite of digital innovations and tools, Stantec.io, we are accelerating and improving our ability to solve the most difficult challenges facing our clients, communities, and industries. With more data at our fingertips than ever before we help our clients understand how this can be used to develop smarter assets, unlock project efficiencies, deliver greater value and achieve the best possible project outcomes for our communities.

We integrate the knowledge of our architects, engineers, scientists, and technical experts with our digital practice teams to exponentially improve how we do what we've always done: design with community in mind.

To find out more about our latest innovations visit www.stantec.com/uk/services/digital





As thought leaders, we marry our real-world experiences with trends, innovations, and challenges impacting the built and natural environment. From smart cities, to sustainable water networks, to energy masterplanning, we have a pulse on the changing nature of the world around us, and we respond by researching and understanding how design will shape the future of our communities.

[Learn More →](#)



email: askstantec@stantec.com
www.stantec.com/uk

Frameworks >

For clients in the public and regulated sectors, our services can be appointed through national frameworks.

SaferTogether™ >

At Stantec, we believe in being SaferTogether™ — looking out for the health and safety of ourselves and those around us, whether we're at work, at home, or in our communities.

Community Engagement >

We provide support for national and local charities through a range of activities which contribute to sustainability and society.

Inclusion & Diversity >

Leading with inclusion brings our work to the next level.

Funding Opportunities Toolkit >

Our GIS enabled toolkit helps identify and unlock funding sources; matching eligibility criteria, tracking deadlines and sharing valuable intel.

We're recruiting >

Join a place where the best and brightest come to build on each other's talents, do exciting work, and make a big impact.

Connect with us

Design with community in mind